

How to Choose the Right Awning Fabric to Reveal, Refresh, or Rebrand Your Business



Table of Contents

Fabric Types.....	3	•Eradi-Lite®.....	17
Know the Purpose.....	4	•Ferrari.....	18
What You Should Consider.....	6	•Firesist®.....	20
Top 7 Questions To Ask About Awning Fabric...9		•Patio500®.....	21
Top 10 Misconceptions Of Awning Fabric.....	10	•Phifertex.....	23
Awning Fabric Choices.....	13	•Sunbrella®.....	24
•AwnTex®- I 60.....	13	•Weathertyte.....	27
•Brite Awn®.....	14		
•BTF.....	15		
•Cooley-Brite®.....	16		

Fabric Types

Choosing Awning Fabric

Choosing fabric is one of the most important factors when installing an awning or unique structure. In order for you to make an informed decision, we have compiled this guide to help you make an educated decision about awning fabrics.



Solution-dyed acrylic (Canvas)

Solution-dyed acrylic is a woven fabric that was developed in Europe in the 1950s. Most fabrics are created from fibers that are initially colorless and then dyed. With this type of fabric, the coloring actually takes place before the yard is created. Acrylic is a generic name for mixtures of at least 85% of acrylonitrile. The other 15% are additives that provide UV light, mildew and water resistance. The loose weave makes it highly breathable, so hot air and moisture will not become trapped.

Vinyl-Coated Polyester

This type of fabric is made up of polyester scrim, a bonding or adhesive agent, and exterior PVC coatings. These fabrics are resistant to UV light, mildew and water and are recommended for use in high humidity areas. They are also very easy to clean and are flame retardant.

Know the purpose

Your awning's purpose is a key factor in choosing your fabric. Most canopies serve more than one purpose, so let's take a look at some of your possible purposes.

It may be primarily practical. You need protection from the elements, shade from the summer sun or an awning that will withstand all weather conditions year-round. Awnings that shade windows reduce glare and solar heat gain, saving you money on air conditioning while keeping people more comfortable indoors. They also protect merchandise, carpet and furnishings from fading and deterioration caused by exposure to ultraviolet light.

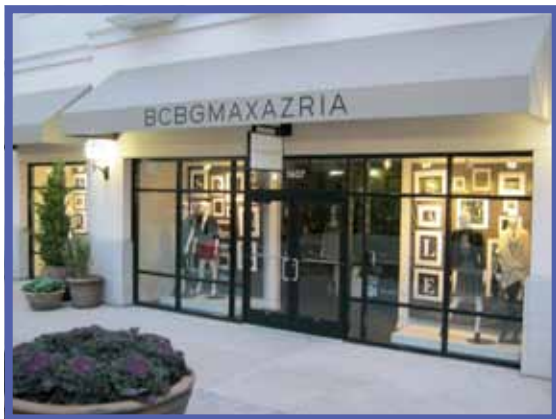
Some states require schools and similar institutions to provide shade for outdoor play. Or perhaps you're a sales floor space or an events or performance area.

Many restaurants add awnings that cover outdoor food and beverage areas, which will allow you to use more space for a longer portion of the year, enabling you to generate more revenue.



It could be primarily a marketing tool, since a canopy provides superb visual benefits. It can identify your business and reinforce your branding, and attract people driving or walking by. If prospective and existing customers can't find you, your business will never grow and thrive.

It could be primarily aesthetic. A canopy is an embellishment that adds personality and draws visual attention, whether it blends or contrasts with your overall building design. Who doesn't want a better looking building or business? It's a matter of pride, increased reputation and greater sales appeal.



It could be an end in itself – a permanent or temporary free-standing structure, as opposed to an attached building component.



All of these factors will contribute to the type of fabric you choose. Before working with an awning installation company, make sure you know the purpose of your awning.

What you should consider

There are a few things you need to consider when choosing your awning fabric.

What kind of graphics or other special artwork will you need?

There are numerous ways you can add text or other graphics to awning fabrics, but not all fabrics work nicely with all methods. The right fabrics provide a blank canvas for your custom colors, logo and other designs. Digital printing lets you literally put any artwork anywhere, and the highest quality inks will give your canopy a fantastic long-lasting look. So which method do you plan to use?

- Older traditional techniques such as hand painting, silk screening and adhesive (pressure-sensitive) vinyl.
- Sewn-in inset fabric.

- Newer high-tech methods such as heat transfer or heat-sealed inset fabric.
- Computerized digital printing that allows you to literally put any image anywhere on your awning, regardless of size or intricate detail. No matter how large, your images always look crisp and colorful.



How will your awning be lit, from the front, back or not at all?

Depending on how you plan to light your awning (front or back lit), you will need to choose a fabric that matches your choice. Back lighting can be particularly attractive and have great impact, even providing a luminescent appearance at night. Some fabrics are designed for certain functional purposes, for instance backlighting including eradication – a process that removes your lettering or other graphics from the surface layer of awning fabrics, leaving a “reverse” white impression. BriteAwn® and Eradi-Lite® awning fabrics are both examples of good products to choose for backlighting.

Where Will Your Awning Be Located?

Some fabrics are better suited for weather extremes such as heat, humidity, cold and wind or environmental factors such as salt or dust or vehicle exhaust. Make sure you are choosing a fabric that fits your local weather norms. Looking for water-

resistant or water-repellant fabric? Weathertyte awning fabrics are 100% waterproof.

If your fabric will be located where there’s a lot of traffic or dust, then you’ll want to check out fabrics specially created and coated to resist dirt and clean easily. And you might want to avoid light colors.



Retractable or Stationary?

Will it need to be retractable? Certain fabrics work better than others for this application.

Permanent, Seasonal, or Temporary?

Will it be permanent, or only used seasonally or temporarily? Obviously awnings that have to last several years require tougher architectural fabrics than those designed for light or short-term use only.

Local Regulations?

Are there any fire code or other pertinent regulations that may apply to your choice of fabric? Specific engineered-in traits enable fabrics to meet certain performance requirements. They can be flame-retardant or fire-resistant. Make sure you know all the local regulations before choosing a fabric.

Other Situations to Consider

It's important to note that not all architectural fabrics are well-suited to all framing systems, so you'll need to consider the requirements of your entire project when selecting the

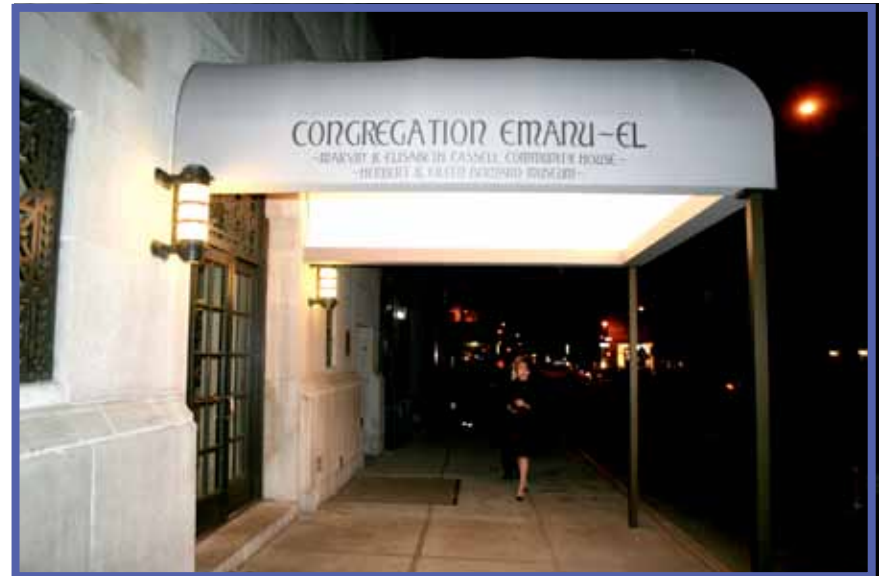
fabric. Even the type of thread used to stitch your awning can make a difference in its ultimate quality and durability.

They can also be UV-resistant to protect people and products from sun damage and reduce solar heat. This type of application improves indoor cooling, saving money and energy on air conditioning. Ferrari, Patio500® and Sunbrella View® awning fabrics are all exceptional when it comes to fending off unwanted heat and ultraviolet light from the sun.

Fabric awnings can even contribute to your LEED energy and atmosphere credits. So choose a fabric that works best for these situations.

Top 7 questions to ask about awning fabric

- Is it fade resistance?
- What is the durability and estimated life expectancy?
- Does it offer UV protection? – some types of awning fabric provide virtually 100% protection for people, furnishings and merchandise.
- Is this fabric mold and mildew resistance?
- Is this fabric resistance to stretching, sagging or tearing?
- Is it flame-retardant?
- Does it have the top-coatings that protect awning fabric from dirt and wear?



Top 10 Fabric Misconceptions of Fabric

1. They all look the same.

Canvas is out, variety is in. You can find fabrics made from high-gloss vinyl or made to look like canvas or linen. Most of today's fabrics are made from high-tech synthetic fibers or feature extra-strong laminated construction.

2. All you get are solid colors and stripes.

Commercial awning fabrics now come in literally hundreds of colors and stripe variations, or you can customize your own color. Some have fun print or geometric patterns on the underside. You can add clear or translucent panels to your awning, or to matching sidewalls.

3. They provide shade but don't protect you from the sun.

You can find commercial awning fabrics that filter out nearly 100% of the sun's ultraviolet rays. That's extremely important if you're covering areas where children play or you have outdoor seating. Eliminating UV rays protects furnishings and merchandise inside your windows, too.



4. You can't use fabric to cover a large area.

Today's commercial awning fabrics lend themselves beautifully to large areas. You can use them to create striking tension membranes, or sails, to cover performance venues or even parking areas. Take a look at Denver's Airport for a great example.



5. They're hard to clean.

Most commercial awning fabrics are super-easy to maintain, as long as you keep dirt and debris off them. Today's fabrics are engineered to resist mildew and stains. And you can add top-coatings that prolong their life and make them even easier to clean.

6. I can't put graphics on them.

You can dress up commercial awning fabrics any way you like. You can add your name and address, your logo, etc. using any one of several graphics applications techniques, or you can use digital printing to add any graphic design anywhere on your awning.

7. They don't last very long.

When you live someplace like New York, the least you should expect is tough awnings that can withstand heavy snow and a bitter cold as well as summer heat and humidity – year after year. Aside from the weather, NYC's major thoroughfares and even side streets can be grimy and gritty, and beach-side communities have wind and salty air and beach-side communities have wind and salty air.

7. Commercial awning fabrics only work for traditional slant-style awnings.

Heaven forbid! Traditional styles have morphed into an array of rounded and domed shapes, double-sided “roof” shapes and boxy looks. You can use today's fabrics to cover any custom-shaped awning you can dream up. You can even use them to cover three-dimensional objects.

9. They're expensive.

Today's commercial awning fabrics come in a wide price range. You can find a fabric you love at a price you can afford.

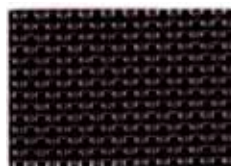
10. Imported commercial awning fabrics are cheaper.

Quality counts. You want a manufacturer who stands behind their products, should you ever have a problem. Getting the best return on your investment depends on low total cost of ownership, and that includes not just the initial price but the cost of upkeep, repairs and – worst of all – premature replacement.

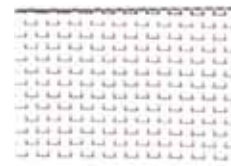
Awning Fabric Choices

Here's a roundup of the different types of awning fabric we recommend:

- **AwnTex®- I60** is an open weave fabric that's beautiful and strong. It is ideal for umbrellas and sunscreens and coordinated chairs or cushions – a great choice for outdoor eating areas. It's highly resistant to rot and mildew, flame retardant, colorfast, easy to clean and comes in multiple colors.



EF7 Brown
#863403



0DY White
#863404



XM2 Gray
#863405



0DZ Alabaster
#863406



L42 Royal Blue
#863407



EF8 Desert Tan
#863408



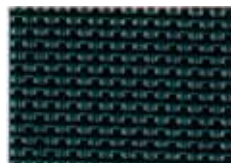
EF5 Winter Wheat
#863400



DM2 Pine Green
#863401



EF6 Beige
#863402



DM3 Dark Green
#863410

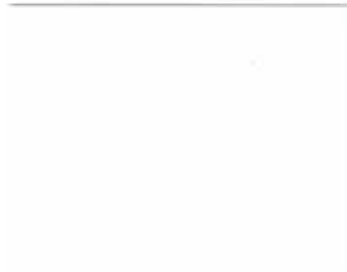


XMY Black
#863409

•**Brite Awn®** is a good choice for back-lit awnings. It has a high gloss finish and offers maximum resistance to mold, mildew, wicking, UV light, cold-cracking and tearing. It comes in multiple colors and has a 5-year warranty.



32 Classic Red
#812695



10 White
#812690



17 Yellow
#812700



14 Forest Green
#812694



12 Royal Blue
#812691

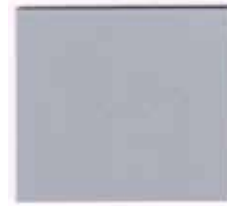


41 Dark Blue
#812697



25 Black
#812703

•**BTF Awning fabrics** are exceptionally durable, designed for awnings and canopies. The fabric offers exceptional dimensional stability, and it's water and soil resistant and flame retardant. It is heat sealable and can be used with heat-sealed inset or sewn-in inset fabric, adhesive vinyl, heat transfer, screen printed or hand painted graphics. It comes in numerous colors, with a 10-year warranty (6 years if you're fabricating rental units).



416 Gray
#879716



417 Dark Gray
#879717



413 Bright Blue
#879713



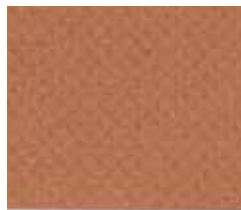
425 Sapphire
#879725



431 Navy
#879731



432 Forest Green
#879732



227 Copper
#879747



410 White
#879710



218 Pearl White
#879748



520 Emerald
#879740



116 Burgundy
#879746



422 Red
#879722



683 Ecu
#879743



419 Tan
#879719



420 Lemon
#879720



509 Terra Cotta
#879749



418 Brown
#879718



427 Black
#879727

•**Cooley-Brite®** awning fabrics come in numerous bright colors. The fabric comes in both 20-oz. and 16-oz. weights, with either white or eradicable substrate. Warranties are either 8 or 10 years.

20 oz. weight:



16 oz. weight:



•**Eradi-Lite®** eradicable awning fabric is designed for backlit applications. It is a vinyl-laminated, ink-colored fabric with anti-wicking and mildew-resistant polyester scrim and an acrylic topcoat that protects against marking, scratching or discoloration. It's easy to clean and highly resistant to stains, mildew, pollution, UV light and rot and comes with an 8-year warranty.



2710 Mid Red
#853810



2700 White
#853800



2754 Reflex Blue
#853854



2753 Light Green
#853853



2724 Yellow
#853824



2704 Mid Blue
#853804



2720 Green
#853820



2752 Light Red
#853852



2751 Orange
#853851



2702 Olympic Blue
#853802



2722 Forest Green
#853822



2712 Red
#853812



2714 Burgundy
#853814



2706 Dark Blue
#853806



2728 Black
#853828

•**Ferrari architectural awning fabric** has excellent dimensional stability and absorbs up to 97% of the sun's heat. It is heat sealable and comes in a variety of solid colors as well as stripes.





502 - 8115



502 - 8450



542 - 1273



542 - 1274



542 - 1088



542 - 1270



542 - 1084



542 - 1086



542 - 1089



542 - 1091



542 - 1082



542 - 1083



542 - 1271



542 - 1272

•**Firesist® awning fabric** offers some subtle tweed patterns as well as traditional solid colors. The fabric is strong, colorfast, weather-resistant and meets fire resistance codes.



82030-0000 NEW GREY



82015-0000 IVORY



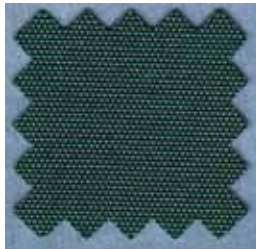
82006-0000 SAND



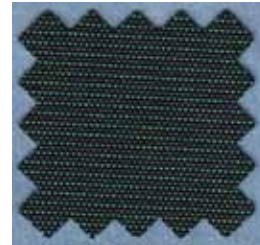
82012-0000 TOASTY
BEIGE



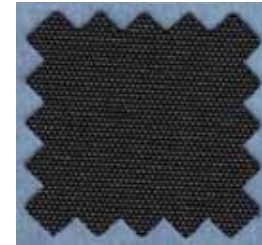
82013-0000 SUNBURST
YELLOW



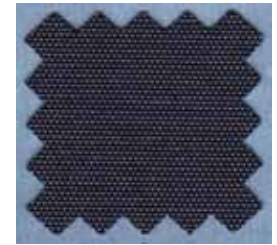
82003-0000 FOREST
GREEN



82002-0000 FOREST
GREENTWEED



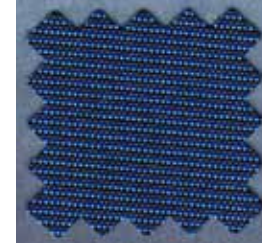
82008-0000 BLACK



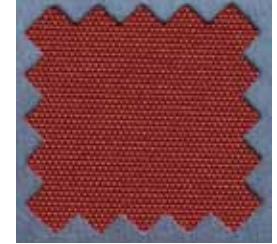
82010-0000 ADMIRAL
NAVY



82000-0000 REGATTA



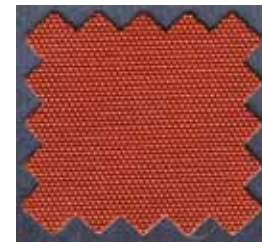
82005-0000 REGATTA
TWEED



82016-0000 BURGUNDY

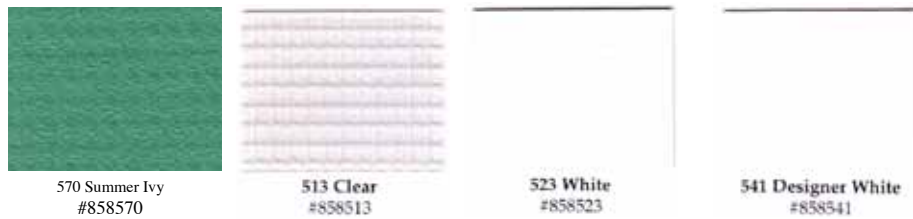


82017-0000 CRIMSON RED



82014-0000 TERRACOTTA

•**Patio500®** is a vinyl laminated 100% polyester awning fabric that resists wicking and crazing. It offers superior resistance to UV light, water and mildew, and its dimensional stability makes it strong and tear-resistant. It comes in multiple solid colors plus duplex options with eggshell or white underside. It is heat sealable and a good choice for sewn-in inset fabric, silk screened, hand painted or applied graphics as well as heat transfer films, heat-sealed or sewn-in inset fabric. It does not work well with pressure-sensitive vinyl or for back-let applications. It is flame resistant and has a 5-year warranty.



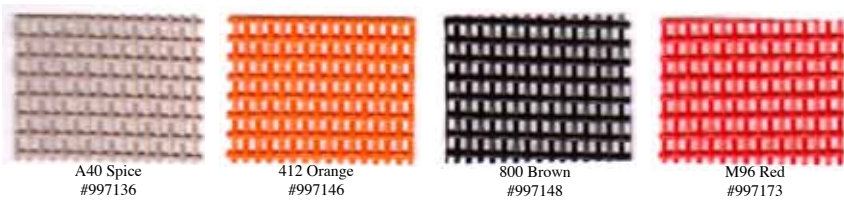
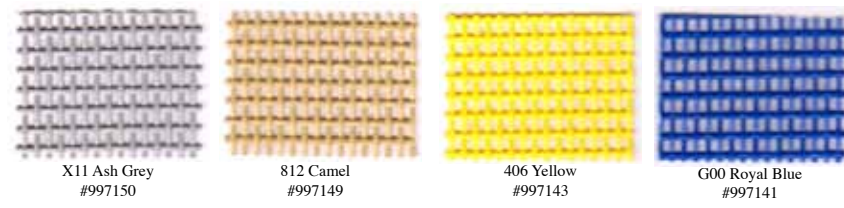
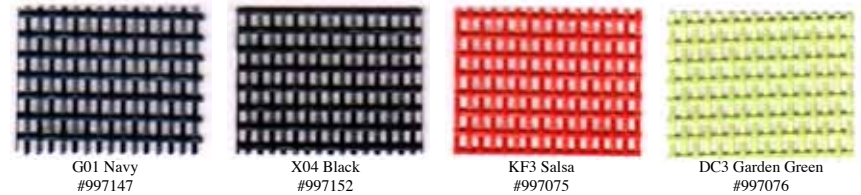


Patio500® Duplex Patterns

Solid topside with complementing solid color underside.



•**Phifertex awning fabric** comes in numerous solid colors, stripes, tweeds and textures created using plain weave, dobby or jacquard patterns. It is strong as well as colorful, making it ideal for umbrellas or breathable awnings.



Phifertex Plus



• **Sunbrella®** may be the best-known brand among our recommended fabrics. It is durable, water-repellent and breathable. Sunbrella View filters 93% of the sun's light and heat, making it an excellent choice for sun screens and roller blinds that improve indoor cooling and protect furnishings, merchandise and people. SunbrellaPlus is a traditional awning fabric that has a urethane undercoating, making it a great choice where water resistance is essential. These fabrics come in myriad solid colors plus stripes and some tweeds, with a 10-year warranty.

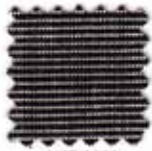




4665-0000
CONCORD



4615-0000
SMOKE (NEW)



4607-0000
CHARCOAL TWEED



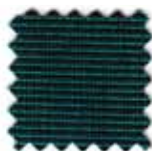
4684-0000
SLATE



4626-0000
NAVY



4645-0000
SEAGRASS GREEN



4605-0000
HEMLOCK TWEED



4637-0000
FOREST GREEN



4656-0000
SPRUCE GREEN



4655-0000
ALPINE



4646-0000
CAPTAIN NAVY



4678-0000
MARINE BLUE



4617-0000
ROYAL BLUE TWEED



4601-0000
PACIFIC BLUE



4679-0000
OCEAN BLUE



4695-0000
TRESKO LINEN



4658-0000
TRESKO BRASS



4696-0000
TRESKO BIRCH



4697-0000
TRESKO GINGER



4698-0000
TRESKO CLAY



4653-0000
MED. BLUE TWEED



4652-0000
MEDITERRANEAN BLUE



4641-0000
SAPPHIRE BLUE



4675-0000
CAPRI



4624-0000
SKY BLUE



4699-0000
TRESKO BRICK



4862-0000
SILCA SILVER



4859-0000
SILCA DUNE



4858-0000
SILCA BARLEY



4860-0000
SILCA SESAME



4673-0000
SPA



4668-0000
ASPEN



4688-0000
BASIL



4685-0000
GINGKO



4671-0000
FERN



4610-0000
TURQUOISE



4612-0000
ARUBA (NEW)



4623-0000
AQUAMARINE



4643-0000
PERSIAN GREEN



4600-0000
ERIN GREEN



4861-0000
SILCA STONE



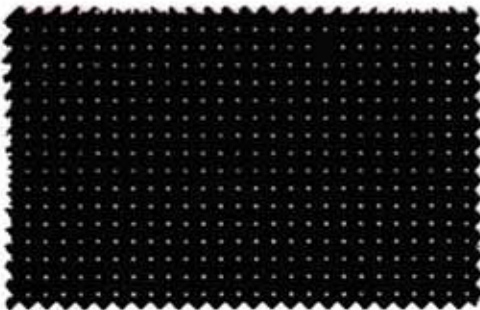
4608-0000 BLACK

SUNBRELLA is the premier performance fabric for awning and marine applications. With its legendary combination of durability, water repellency, breathability and beautiful style, Sunbrella® fabric is the perfect canvas for shading on land or at sea.



8408-0000 BLACK

SUNBRELLA PLUS is our traditional Sunbrella awning and marine fabric with a durable polyurethane undercoating for superior water resistance. Sunbrella Plus uses standard Sunbrella colors for easy color coordination and is ideal wherever water resistance is essential.



3908-0000 BLACK

SUNBRELLA VIEW is a shade fabric that filters up to 93% of the sun's heat and light, keeping interior environments cool during warmer months. It brings the legendary performance guarantee of Sunbrella to roller shades, solar screens, vertical blinds and more, delivering beautiful shade that lasts for years.



9408-0000 BLACK

SUNBRELLA SUPREME is a luxurious, waterproof exterior marine fabric featuring Sunbrella canvas on the exterior face, and a special Sunbrella flocking on the reverse side. The unique bonding process creates a waterproof Sunbrella canvas with a beautifully soft headliner underneath.

• **Weathertyte awning fabric** is entirely waterproof. It is resistant to fire, fungus and UV light and comes in two weights with a 5- or 8-year warranty. The textured solid colors are digitally printable.

Weathertyte Lite - 2 sided color



Weathertyte- 16oz



In the end your canopy will reflect the quality of the materials and workmanship you choose, so saving money up front with inferior or unproven fabrics won't provide the result you have in mind. Instead, protect your investment by selecting the right framing and most appropriate, highest quality architectural fabrics. We hope this helps you in your awning selection. If you have any questions then please contact Capitol Awning.

**Get Your
FREE CONSULTATION!**